

30A Avg.

40 Volts

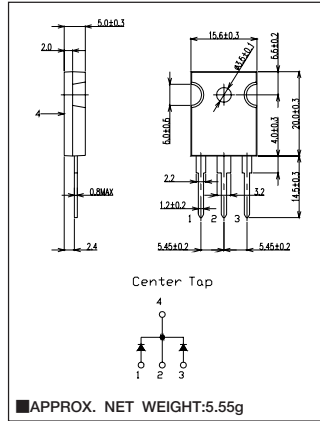
SBD

KCQ30A04

■最大定格 Maximum Ratings

Item	Symbol	Conditions			Unit
繰り返しピーク逆電圧 Repetitive Peak Reverse Voltage	$V_{RRM}$	40			V
非繰り返しピーク逆電圧 Non-Repetitive Peak Reverse Voltage	$V_{RSM}$	45			V
平均整流電流 Average Rectified Forward Current	$I_O$	50Hz、正弦全波通電抵抗負荷 50Hz Full Sine Wave Resistive Load	$T_c=110^{\circ}C$	30	A
実効順電流 R.M.S. Forward Current	$I_F(RMS)$	33.3			A
サージ順電流 Surge Forward Current	$I_{FSM}$	300 (50Hz正弦全波, 1サイクル, 非繰り返し) 50Hz Full Sine Wave, 1cycle, Non-repetitive			A
動作接合温度範囲 Operating Junction Temperature Range	$T_{jw}$	-40~+150			$^{\circ}C$
保存温度範囲 Storage Temperature Range	$T_{stg}$	-40~+150			$^{\circ}C$
締付トルク Mounting torque	$F_{tor}$	推奨値 Recommended Value		0.5	N·m

■OUTLINE DRAWING(mm)



■電氣的・熱的特性 Electrical/Thermal Characteristics

Item	Symbol	Conditions	Min.	Typ.	Max.	Unit
ピーク逆電流 Peak Reverse Current	$I_{RM}$	$T_j=25^{\circ}C, V_{RM}=V_{RRM}$ , 一素子あたり Per Diode	—	—	15	mA
ピーク順電圧 Peak Forward Voltage	$V_{FM}$	$T_j=25^{\circ}C, I_{FM}=15A$ , 一素子あたり Per Diode	—	—	0.55	V
熱抵抗 Thermal Resistance	$R_{th(j-c)}$	接合部・ケース間 Junction to Case	—	—	1.3	$^{\circ}C/W$

■定格・特性曲線

